

## Blackpool Victoria Hospital Emergency Department

### Monthly Bulletin: April 2006 to March 2007

This bulletin provides a breakdown of all attendances<sup>i</sup> at Blackpool Victoria Hospital Emergency Department (ED) between April 2006 and March 2007.

Between April 2006 and March 2007 there were 90,012 attendances to Blackpool Victoria Hospital ED. The month with the highest attendance was July with 8,611 attendances (**Figure 1**). There were more male than female attendances presenting at Blackpool Victoria Hospital ED (males=47,640; 53%).

**Figure 2** illustrates age group of ED attendances for each month. The majority of ED attendances were aged 30-59 (n=29,980; 33%) and 26% of attendances were over 60 years old (n=23,000). Most ED attendances were self-referred (57%) or referred by an emergency call/ambulance (30%) (**Table 1**).

**Table 2** details the injury group of ED attendances. The majority (88%) of attendances were recorded as other injury. Sports injury accounted for 3% of attendances, road traffic collisions (RTC) 3% and assaults 3%.

**Table 3** shows the location of incident for ED attendances. It shows that more than half of incidents occurred in the home (56%), and over a fifth (21%) occurred in public places.

The discharge destination for ED attendances is displayed in **Table 4**. It indicates that three in ten

(30%) of attendances were discharged with no follow-up treatment. Over a quarter (26%) of attendances were discharged into the care of their GP and 21% were admitted into hospital.

#### Assault attendances

Between April 2006 and March 2007 there were 3,080 assault attendances to Blackpool Victoria Hospital ED. The month with the highest attendance was July with 290 attendances (**Figure 3**). There were more male than female assault attendances presenting at Blackpool Victoria Hospital ED (males=2,371; 77%).

**Table 5** details the age group of assault attendances for each month. The majority of ED assault attendances were aged 15-29 (n=1,642; 53%) and 40% were 30-59 years old (n=1,233).

**Table 6** shows the location of incident for assault attendances. It shows more than half (55%) occurred in a public place, with over one in five (19%) in the home.

**Table 7** illustrates the general discharge destination for assault attendances to Blackpool Victoria Hospital ED. More than four in ten (41%) were discharged without follow-up treatment; 40% required follow-up treatment. Under one in twenty (3%) assault attendances were admitted to hospital.

Figure 1: Gender of ED attendances by month, April 2006 to March 2007

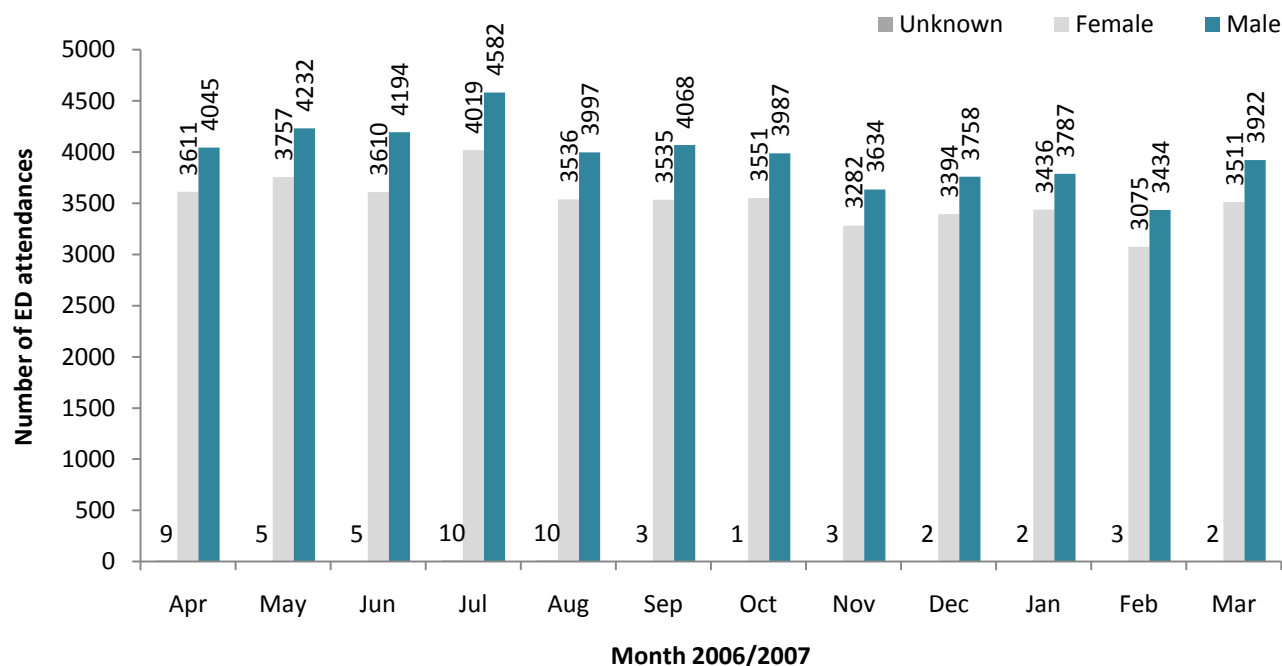


Figure 2: Age group of ED attendances by month, April 2006 to March 2007

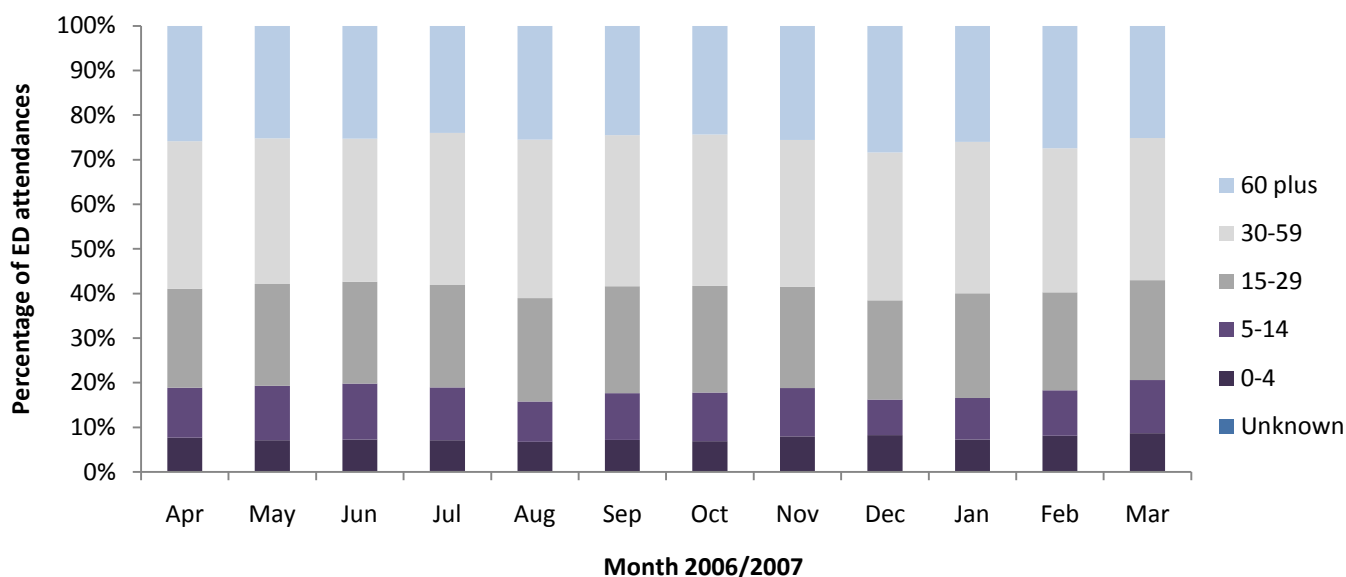


Table 1: ED attendances by source of referral and month, April 2006 to March 2007<sup>23</sup>

Source of referral	Apr	May	Jun	Jul	Aug	Sep	Oct	Nov	Dec	Jan	Feb	Mar	Total	%
Self referral	4500	4692	4593	5050	4311	4432	4108	3842	3754	3891	3453	4237	50863	57
Emergency call/ambulance	2242	2221	2256	2515	2273	2251	2388	2143	2391	2364	2091	2219	27354	30
Other referrer	264	261	253	305	292	242	274	233	260	242	252	238	3116	3
GP	252	233	215	181	179	169	183	188	197	244	224	215	2480	3
Walk-in centre	115	160	141	148	127	131	166	116	161	121	140	132	1658	2
Employer	58	106	104	110	90	88	82	65	51	57	74	84	969	1
Police	50	46	33	59	53	78	79	76	96	68	76	60	774	1
Educational establishment	44	101	69	62	***	68	70	94	39	59	47	83	736	1
NHS Direct	44	71	54	68	40	49	81	50	48	60	34	53	652	1
FCMS	58	54	44	56	61	44	48	52	78	55	50	46	646	1
ED staff	10	13	20	33	82	28	32	28	44	34	34	47	405	0
Other hospital	14	17	16	20	21	16	19	22	24	20	24	8	221	0
Prison service	5	9	***	***	***	***	***	***	5	***	8	8	53	0
LA/social services	5	8	5	***	5	***	***	***	***	***	***	***	44	0
Optician	***	***	***	***	5	5	***	***	***	***	***	5	41	0
Total	7665	7994	7809	8611	7543	7606	7539	6919	7154	7225	6512	7435	90012	100

**Table 2: ED attendances by injury group and month, April 2006 to March 2007<sup>4</sup>**

Patient group	Apr	May	Jun	Jul	Aug	Sep	Oct	Nov	Dec	Jan	Feb	Mar	Total	%
Other injury	6758	6969	6973	7638	6749	6635	6478	6050	6340	6397	5753	6481	79221	88
Sports injury	274	297	233	256	189	342	312	264	138	240	228	339	3112	3
Assault	277	280	272	290	256	254	274	261	280	226	176	234	3080	3
RTC	194	267	183	242	186	203	280	193	221	195	171	181	2516	3
Overdose	127	138	123	149	144	133	158	116	151	140	139	161	1679	2
Deliberate self-harm	35	43	25	36	19	39	37	35	24	27	45	39	404	0
<b>Total</b>	<b>7665</b>	<b>7994</b>	<b>7809</b>	<b>8611</b>	<b>7543</b>	<b>7606</b>	<b>7539</b>	<b>6919</b>	<b>7154</b>	<b>7225</b>	<b>6512</b>	<b>7435</b>	<b>90012</b>	<b>100</b>

**Table 3: ED attendances by location of incident and month, April 2006 to March 2007**

Location	Apr	May	Jun	Jul	Aug	Sep	Oct	Nov	Dec	Jan	Feb	Mar	Total	%
Home	4437	4364	4274	4577	4026	3920	4053	3945	4356	4424	3981	4306	50663	56
Public place	1666	1743	1805	1967	1801	1695	1675	1287	1236	1242	1200	1346	18663	21
Other	1052	1190	1043	1449	1321	1354	1170	998	1046	956	812	1047	13438	15
Workplace	356	379	426	432	388	373	387	363	319	349	318	384	4474	5
Educational establishment	153	318	259	186	6	261	254	326	195	252	201	352	2763	3
Unknown	***	***	***	***	***	***	***	***	***	***	***	***	11	0
<b>Total</b>	<b>7665</b>	<b>7994</b>	<b>7809</b>	<b>8611</b>	<b>7543</b>	<b>7606</b>	<b>7539</b>	<b>6919</b>	<b>7154</b>	<b>7225</b>	<b>6512</b>	<b>7435</b>	<b>90012</b>	<b>100</b>

**Table 4: ED attendances by discharge destination and month, April 2006 to March 2007<sup>5</sup>**

Discharge destination	Apr	May	Jun	Jul	Aug	Sep	Oct	Nov	Dec	Jan	Feb	Mar	Total	%
Discharged - no follow-up	2272	2399	2297	2770	2061	2312	2156	2074	1959	1969	2054	2499	26822	30
Refer to GP	1968	2160	2076	2102	2088	1967	2003	1807	1944	1933	1545	1805	23398	26
Admissions	1680	1620	1528	1590	1601	1562	1657	1495	1686	1758	1562	1485	19224	21
Fracture clinic	470	530	500	572	482	490	475	392	418	437	364	458	5588	6
Did not wait	360	345	412	493	323	346	284	233	271	243	213	260	3783	4
ED clinic	236	289	331	373	320	290	282	271	270	266	246	325	3499	4
Out-patient department	254	262	281	278	246	231	255	262	232	217	186	222	2926	3
Own discharge	80	51	54	61	66	60	75	60	70	84	60	64	785	1
Physiotherapist	56	63	51	66	48	67	54	61	26	41	46	51	630	1
Transfer to other hospital	63	52	52	48	40	46	44	41	37	51	30	39	543	1
Left - before treatment	37	31	27	37	30	27	27	29	31	25	26	26	353	0
Practice nurse	27	27	31	36	35	34	32	26	22	33	19	26	348	0
Follow up at local hospital	***	15	38	46	44	33	44	26	28	20	16	24	334	0
Community psychiatric nurse	24	22	20	21	31	28	33	25	21	21	29	26	301	0
Dentist	21	18	10	26	23	20	20	16	15	14	13	28	224	0
Mortuary	15	12	15	7	11	15	20	15	11	18	24	13	176	0
Left - refused treatment	22	21	10	10	14	10	17	6	13	13	20	15	171	0
DVT practitioner	8	11	17	20	16	18	10	14	17	10	8	12	161	0
Not registered with GP	18	18	16	9	11	11	6	15	13	11	12	12	152	0
Removed by police	11	10	16	7	13	7	10	15	13	19	9	12	142	0
Other	14	11	***	13	17	8	6	12	18	11	12	10	136	0
Social services	12	15	12	8	10	6	12	14	5	6	***	***	103	0
District nurse	8	***	8	7	5	9	10	7	12	7	***	10	88	0
Health visitor	7	6	***	***	7	7	***	***	***	10	5	9	68	0
FCMS	***	***	***	7	***	***	***	***	19	8	9	***	57	0
Alcohol liaison service	***	***	***	***	***	***	***	***	***	***	***	***	***	0
<b>Total</b>	<b>7665</b>	<b>7994</b>	<b>7809</b>	<b>8611</b>	<b>7543</b>	<b>7606</b>	<b>7539</b>	<b>6919</b>	<b>7154</b>	<b>7225</b>	<b>6512</b>	<b>7435</b>	<b>90012</b>	<b>100</b>

## Assaults

Figure 3: Number of ED assault attendances by gender and month, April 2006 to March 2007

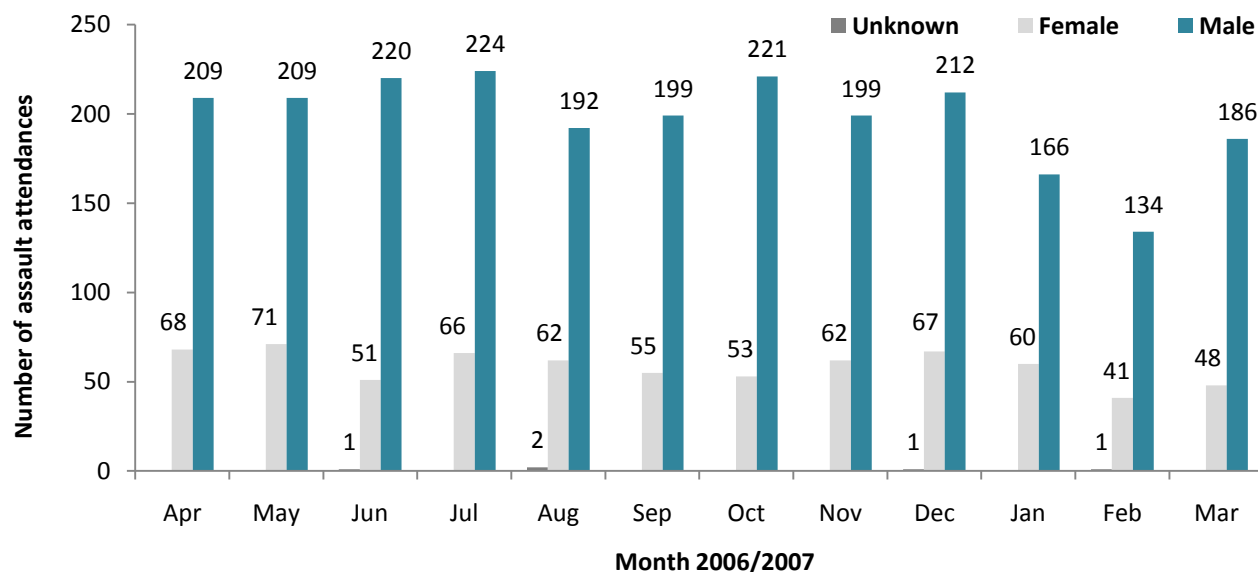


Table 5: ED assault attendances by age group and month, April 2006 to March 2007

Age group	Apr	May	Jun	Jul	Aug	Sep	Oct	Nov	Dec	Jan	Feb	Mar	Total	%
Unknown	***	***	***	***	***	***	***	***	***	***	***	***	8	0
0-4	***	***	***	***	***	***	***	***	***	***	***	***	6	0
5-14	10	13	15	16	5	8	12	22	13	7	11	10	142	5
15-29	146	152	154	153	121	137	145	131	169	119	88	127	1642	53
30-59	114	109	100	114	125	100	113	100	92	96	74	96	1233	40
60 plus	7	5	***	***	***	8	***	7	***	***	***	***	49	2
<b>Total</b>	<b>277</b>	<b>280</b>	<b>272</b>	<b>290</b>	<b>256</b>	<b>254</b>	<b>274</b>	<b>261</b>	<b>280</b>	<b>226</b>	<b>176</b>	<b>234</b>	<b>3080</b>	<b>100</b>

Table 6: ED assault attendances by location of incident and month, April 2006 to March 2007

Location	Apr	May	Jun	Jul	Aug	Sep	Oct	Nov	Dec	Jan	Feb	Mar	Total	%
Public place	168	162	171	145	136	131	167	136	143	104	97	121	1681	55
Other	43	54	39	75	63	71	48	48	63	57	35	39	635	21
Home	51	49	50	57	49	38	42	55	57	55	33	56	592	19
Workplace	14	14	5	7	8	12	10	9	9	7	8	11	114	4
Educational establishment	***	***	7	6	***	***	7	13	8	***	***	7	58	2
<b>Total</b>	<b>277</b>	<b>280</b>	<b>272</b>	<b>290</b>	<b>256</b>	<b>254</b>	<b>274</b>	<b>261</b>	<b>280</b>	<b>226</b>	<b>176</b>	<b>234</b>	<b>3080</b>	<b>100</b>

Table 7: ED assault attendances by discharge destination and month, April 2006 to March 2007

Discharge destination	Apr	May	Jun	Jul	Aug	Sep	Oct	Nov	Dec	Jan	Feb	Mar	Total	%
Discharged	101	116	93	123	103	107	121	114	115	88	76	108	1265	41
Follow-up	115	107	128	110	106	107	104	107	114	92	76	80	1246	40
Other	47	48	43	49	37	34	38	34	43	38	20	39	470	15
Admitted	14	9	8	8	10	6	11	6	8	8	4	7	99	3
<b>Total</b>	<b>277</b>	<b>280</b>	<b>272</b>	<b>290</b>	<b>256</b>	<b>254</b>	<b>274</b>	<b>261</b>	<b>280</b>	<b>226</b>	<b>176</b>	<b>234</b>	<b>3080</b>	<b>100</b>

Published July 2010

Johnathan Rooney (Lancashire TIIG Officer)

Centre for Public Health, Liverpool John Moores University, 3rd Floor, Henry Cotton Campus, Liverpool, L3 2ET

Tel: 0151 231 4500 Email: j.rooney@ljmu.ac.uk

Website: [www.tiig.info](http://www.tiig.info) (please note data requests should be made through the website)

<sup>1</sup> For other EDs, TIIG reports on injuries only. However, this report includes all attendances at Blackpool Victoria Hospital ED. This is due to the medical and injury attendances being categorised within the patient group 'other injury'.

injury groups amongst attendances at Aintree AED which makes it difficult to analyse injury attendances separately

<sup>2</sup> GP=general practitioner, LA=local authority and FCMS=Flyde Coast Medical Services Ltd

<sup>3</sup> Please note that all numbers less than five have been suppressed (with \*\*\*) in line with patient confidentiality; and if there is only one number less than five in a category then two numbers will be suppressed to prevent back calculations from totals.

<sup>4</sup> Due to low numbers fireworks injuries have been included under 'other injury'.

<sup>5</sup> DVT=deep vein thrombosis.